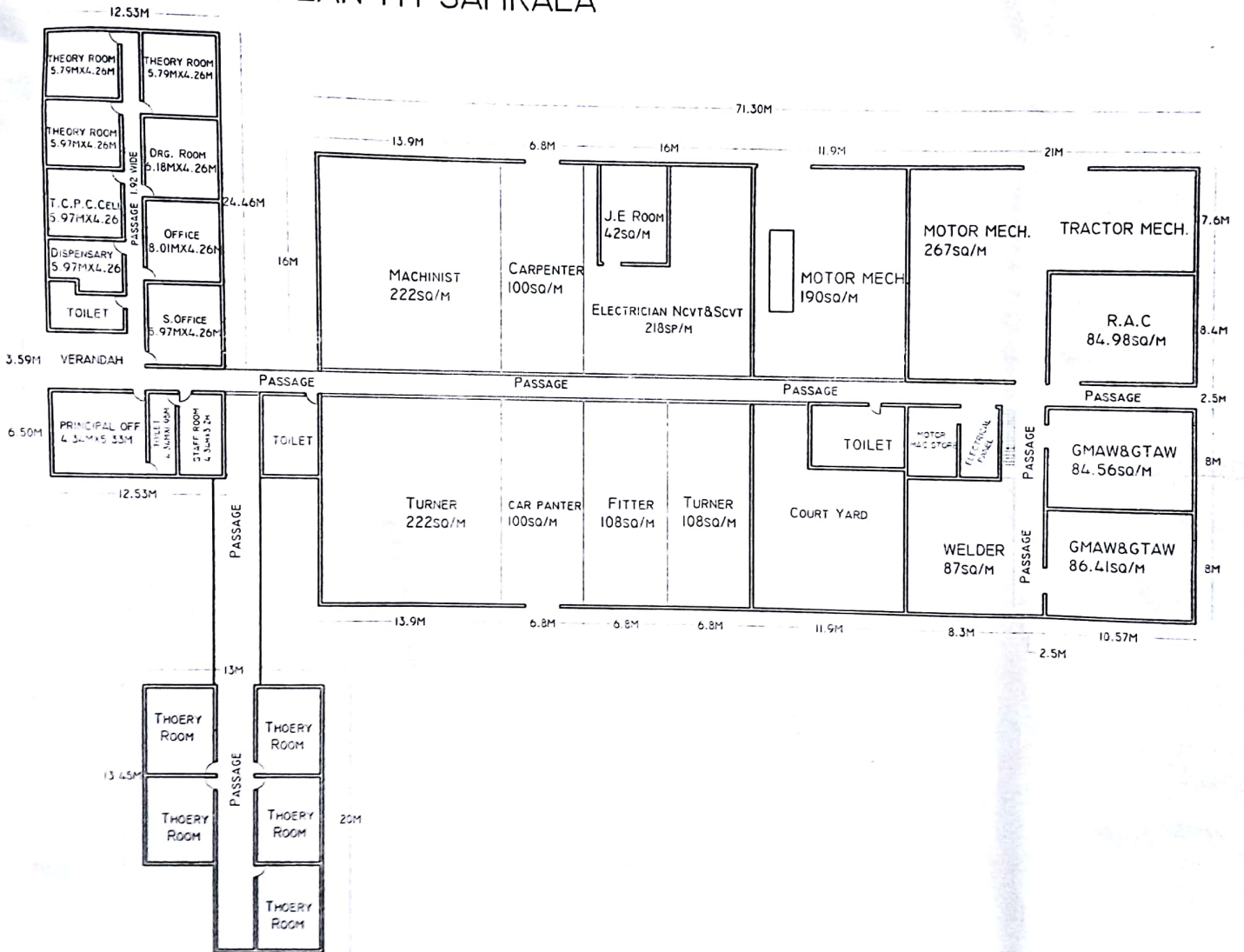
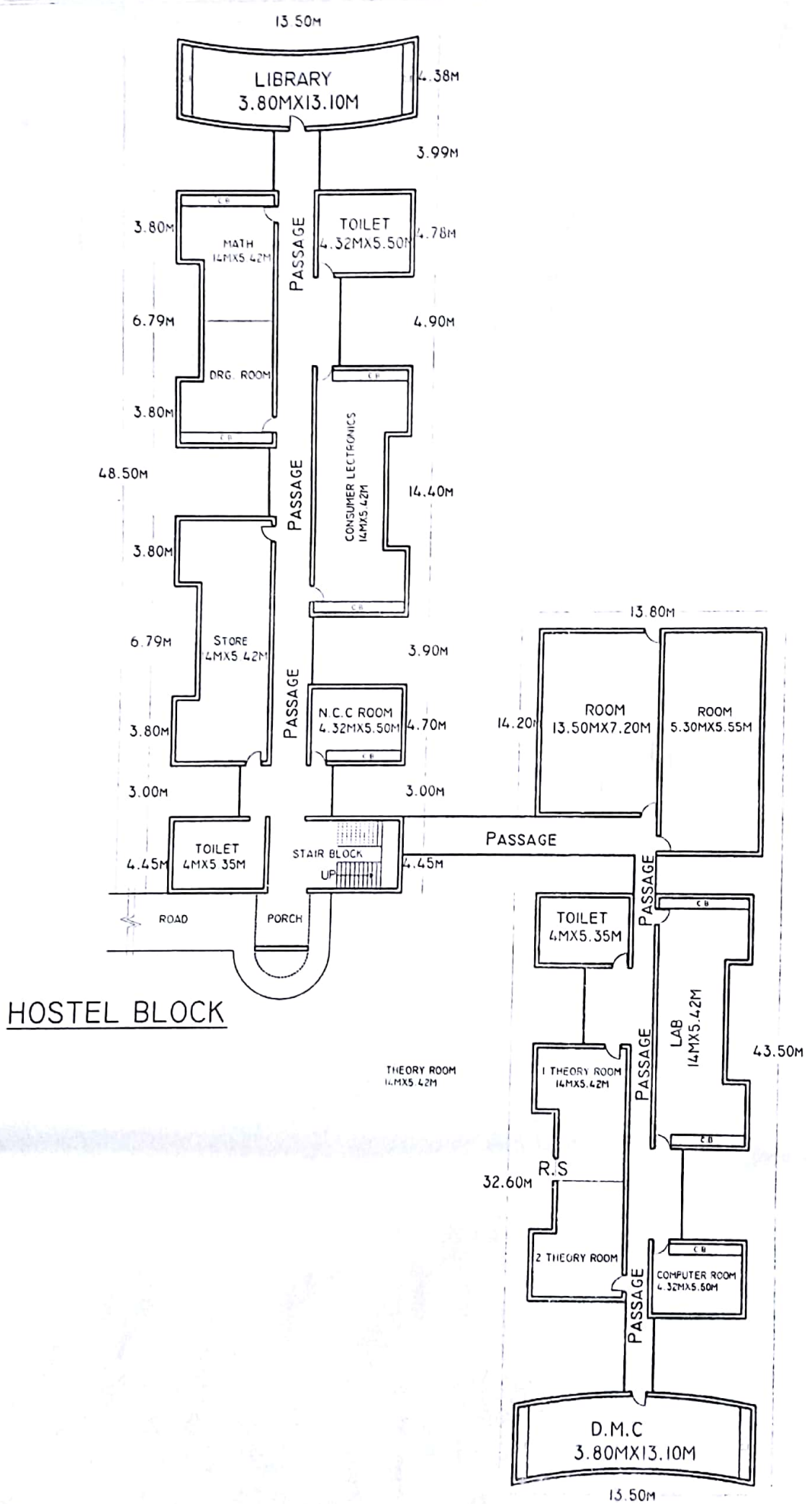


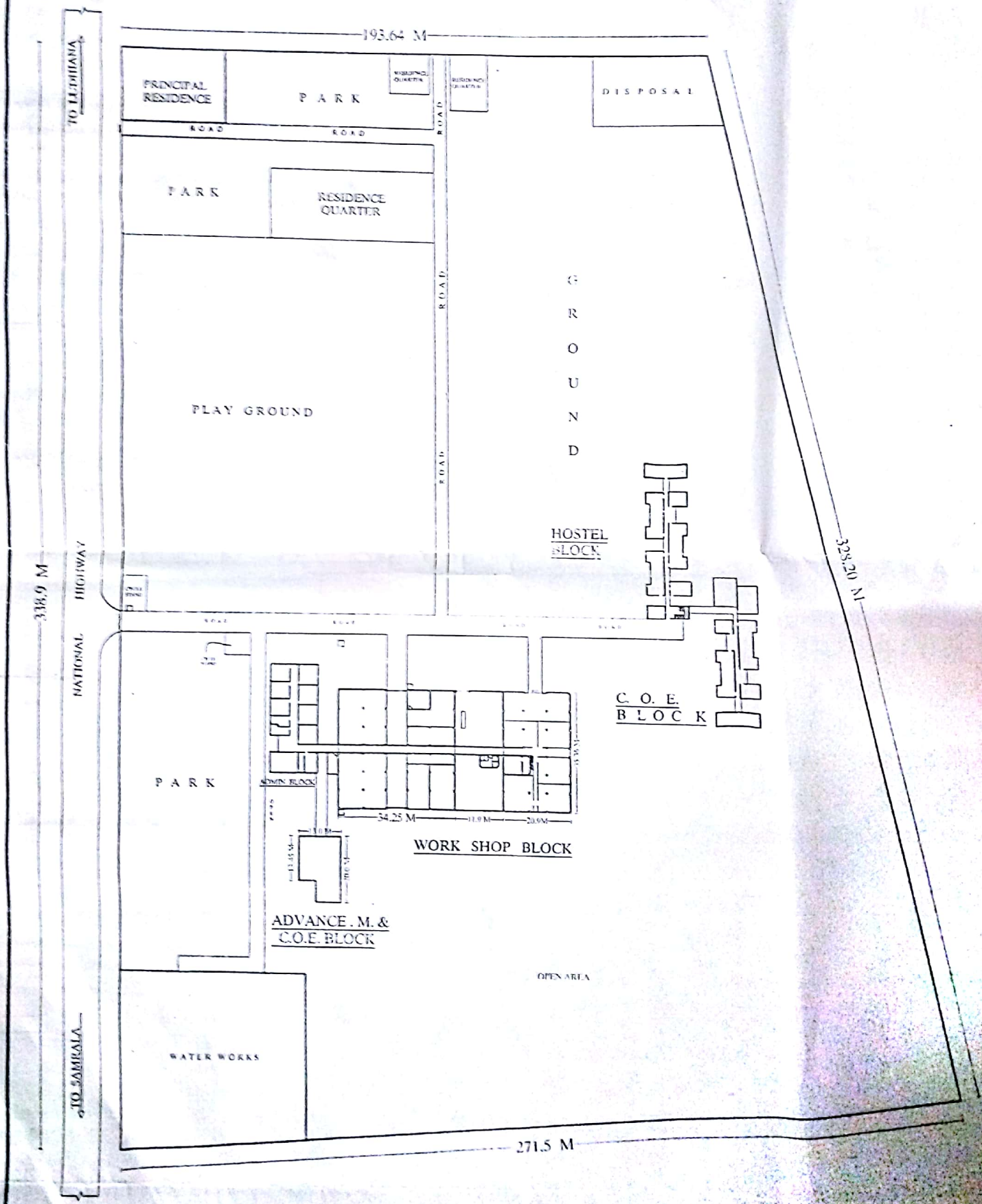
SITE PLAN ITI SAMRALA

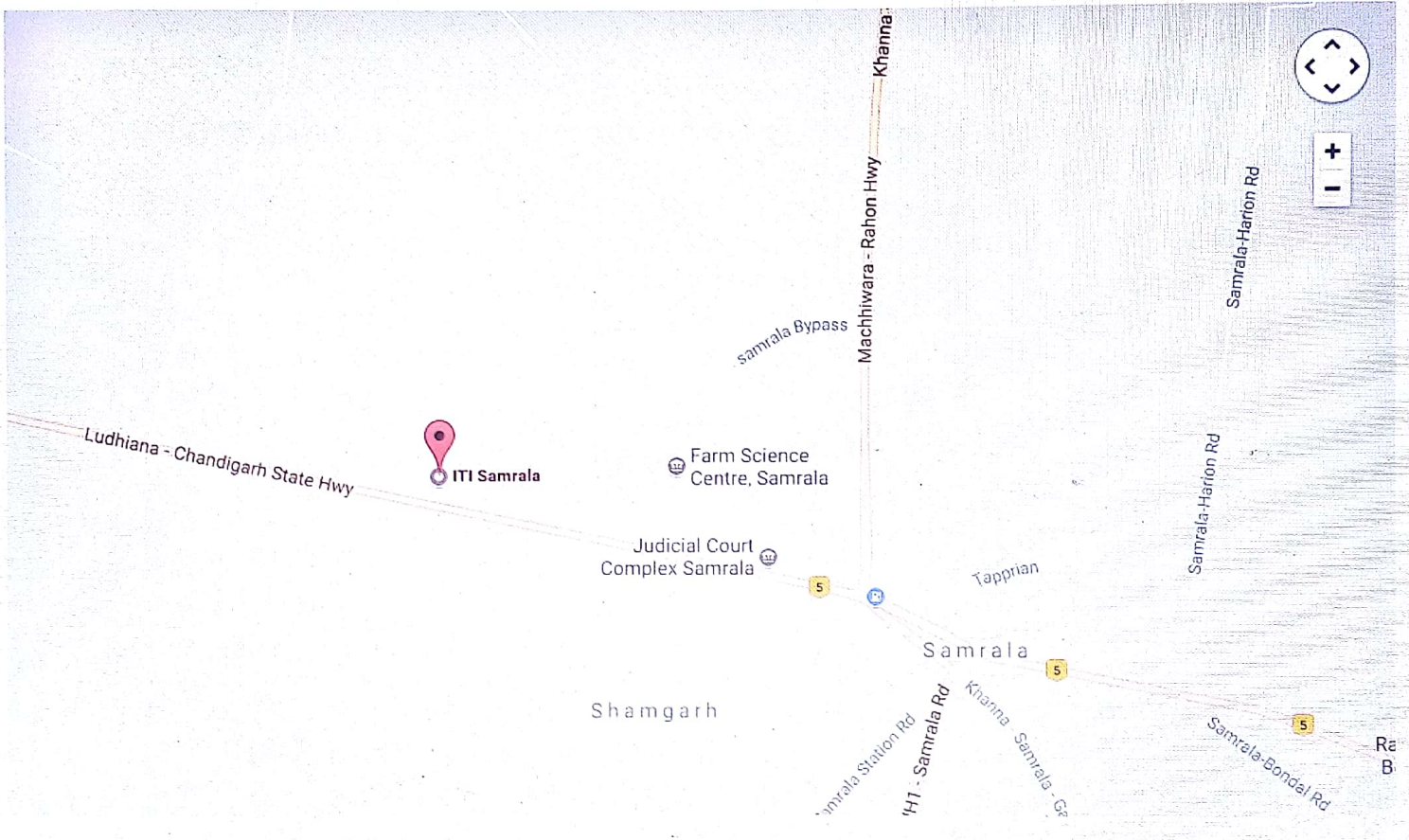




HOSTEL BLOCK

SITE PLAN GOVT I.T.I. SAMRALA





GOVT. ITI SAMRALA, DISTT.- LUDHIANA (PUNJAB)

S.NO.	DESCRIPTION OF BUILT UP AREA	REQUIRED AS PER NORMS (Sq. M)	AVAILABLE (Sq. M)	REMARKS (IF ANY)
1	Principal Room	20-25	23.13	
2	Staff Room	10% OF SANCTIONED SEATS	13.8	
3	Clerk Room	1/CLERK INCLUDING STORAGE SPACE	27.22+34.08=61.30	
4	Record Room	10 to 15	NA	
5	Library	10% OF SANCTIONED SEATS WITH MIN. 25	50	
6	Class Room	30 Sq. Ml. EVERY FOUR UNITS	210	
7	Demonstration Hall	50-60	NA	
8	Drawing Hall	15 FOR EVERY 100 SEATS OR PART THEREOF SUBJECT TO 30 MIN.	60	
9	Canteen	30-50	NA	
10	Tool Room	NA	NA	
11	Allied Trade	0.50 PER TRAINEE Min. 125 to 400 Max.	NA	
12	Store Room	NA	75.88	
13	Dispensary	NA	25.43	
14	Workshop/Laboratory	AS PER TRADES	2438	
15	Computer Lab	NA	23.76	